

ZETLAB

ZET 024 & ZET 028: STATE-OF-THE-ART VIBRATION CONTROLLERS



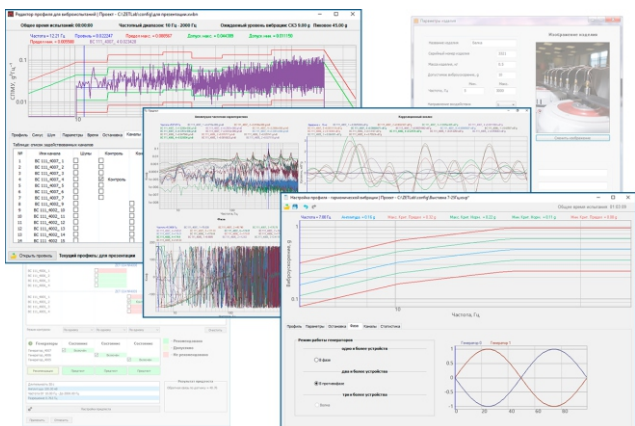
- software and hardware suite based on 4- and 8-channels shaker controllers;
- it is possible to increase the number of the input channels up to 512 by integrating additional controllers into the system;
- 4 output control channels enable parallel operation of several vibration generating systems;
- support of ICP (IEPE), DeltaTron, ISOTRON transducers, TEDS sensors, charge sensors and voltage output transducers;
- state-of-the-art software provides the user with recommendations concerning control functions in terms of the selected vibration testing profile, controls the feedback quality of the selected measurement channels and conducts operational diagnostics at the preliminary stage of testing performance.

BASIC CHARACTERISTICS of the shaker controllers

TECHNICAL SPECIFICATIONS	
Digit capacity	24 digits
Frequency range	DC ... 20 kHz
Dynamic range	110 dB
Voltage range (by input and output channels)	±10 V
Analog and digital filtration	available
Modules synchronization	IEEE 1588 Precision TimeProtocol (PTP)

OPERATIONAL SPECIFICATIONS	
Dimensions	300 × 240 × 35 mm
Weight	1 kg
Power supply frequency	49,5 - 50,5 Hz
Power supply voltage	198 - 242 V
Consumed power	max 10 VA
PC connection interface	Ethernet

FUNCTIONAL RANGE OF ZETLAB VIBRO SOFTWARE



- ✓ Pre-test and control;
- ✓ Sinusoidal vibration (Sine);
- ✓ Broadband random vibration (Random);
- ✓ Classical shock (Shock);
- ✓ Vibrational shock;
- ✓ Resonance search, track and dwell (RSTD);
- ✓ Gunfire impact imitation;
- ✓ Shock response spectrum (SRS);
- ✓ Transient time history (TTH);
- ✓ Field data replication (FDR);
- ✓ Fatigue damage spectrum (FDS);
- ✓ Combined test profiles: Sine-on-Random; Random-on-Random; Sine-on-Sine; Sine-and-Random-on-Random.

